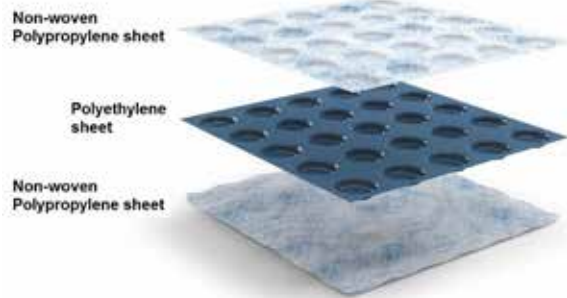




PRODESO MEMBRANE SYSTEM APPLICATION MANUAL



MATERIAL

PRODESO is an uncoupling, waterproofing and vapour management membrane, with a thickness of 3,0 mm. The membrane is composed by a low density polyethylene sheet provided on both sides with non-woven thermos-welded polypropylene fabric that guarantees its adhesion. The **PRODESO** interconnected channels guarantee the flow of the vapor pressure generated by the evaporation of the residual water into the substrate. The same channels guarantee the heat distribution in case of floor heating.

PROBAND KOLL is an hydrophobic fast setting single-component adhesive with very low VOC emissions. It guarantees with **PROBAND 150 / 250** the waterproofing between two adjacent sheets of **PRODESO** and the connection between floor and wall. **PROBAND KOLL** develops a very fine dough with a red color, with high workability and hydrophobicity and ensures a high adhesion of **PROBAND 150/250**. Mix 1 bag (5 Kg) with 1,3 liter of water no less than 60 seconds.

PROBAND 150 / 250 it guarantees the waterproofing of terraces, balconies and indoor environments that may come in contact with water such as bathrooms, saunas and kitchens.

AREAS OF USE

Use

Uncoupling and waterproofing membrane for cracked and not perfectly cured screed. It can be laid on cement based screed, old ceramic and natural stone floorings, not

perfectly cured screed and wood substrates. It guarantees the waterproofing of terraces, balconies and indoor environments that may come in contact with water such as bathrooms, saunas and kitchens. Very resistant to saline solutions, acids and alkalis, alcohol and oils. In case of particular products, contact our technical department.

Do not use

On bituminous coverings, to waterproof walkable surfaces and on lightweight screeds not suitable for the laying of flooring. With adhesives containing solvents.

WARNINGS

During the summer periods **PRODESO** must be unrolled under the sunlight before the installation no less than 30 minutes. For the laying of **PRODESO** mix the adhesive with 10% - 20% of water more than the percentage written on the bag to guarantee the full back coverage of the membrane (watch the installation video <https://www.youtube.com/watch?v=I1I6EiWYHX4>).

Lay the tiles immediately after the application of **PRODESO** to avoid its exposure to sunlight. Once installed, the membrane must be protected against heavy mechanical loads to avoid damage. It is advisable to place running boards to protect the membrane. Do not use it on substrates subject to continuous rising moisture. For information not explained in the technical details, please contact our technical department.

LAYING INSTRUCTIONS PREPARATION OF THE SUPPORT

1. Clean the support from dust, oil, grease, friable or weakly anchored parts, cement residuals, lime, plaster or paintings.
2. Verify the screed flatness and in case of waterproofing the presence of adequate slopes, suitable for the discharge of rain waters.
3. Verify the solidity of the screed with a hammer.
4. Verify the resistance to the abrasion of the screed with a chisel. Repair possible cracks in the screed bigger than 1 mm with an epoxy double-component ultra-rapid resin. In case of overlapping, verify anchoring and the cleanliness of the old floors.





PRODESO MEMBRANE SYSTEM APPLICATION MANUAL



UNCOUPLING

5. Cut **PRODESO** to the desired length and with a notched trowel 7 x 5 mm apply a C2TE adhesive mixed with an amount of water more than the percentage written on the bag to guarantee the full back coverage of the membrane (watch the video <https://www.youtube.com/watch?v=JepXWs7KJ-E>); use a suitable adhesive according to the support.

6. Apply **PRODESO** over the wet adhesive and press the membrane using a plastic trowel.

7. Check the back wetting of **PRODESO**. In case of non complete wetting, increase the quantity of adhesive (watch the installation video https://www.youtube.com/watch?v=j-bQdDx_2M at 1 minute and 5 seconds).

8. Lay the next sheet of **PRODESO** taking care to align it with the previous one, without overlapping.



WATERPROOFING Between adjacent sheets

9. Apply **PROBAND KOLL** along the joint between two adjacent sheets of **PRODESO** with the flat side of the notched trowel, for a width of about 20 cm. Take care to fill the cavities of the membrane and to leave a thin layer of adhesive on top of the channels.

10. Place **PROBAND 150** on **PROBAND KOLL** following the joint. Apply strong pressure and smooth **PROBAND 150** to ensure the adhesion, avoiding the formation of folds.

Floor – wall connection

11. Apply **PROBAND KOLL** on the membrane, with the flat side of the notched trowel, for a width of about 10 cm. Take care to fill the cavities of the membrane and to leave a thin layer of adhesive on top of the channels. Apply **PROBAND KOLL** on the wall with a 3 x 3 mm notched trowel for a height of about 10 cm.

12. Place **PROBAND 150 / 250** on **PROBAND KOLL** following the joint. Apply strong pressure and smooth **PROBAND 150 / 250** to ensure the adhesion, avoiding the formation of folds.





PRODESO MEMBRANE SYSTEM APPLICATION MANUAL



Internal corner

13. Cut a piece of **PROBAND 150 / 250**, 40 centimeters long, and make a cross cut in the center to half height.

14. Fold the strip in order to obtain an internal corner with overlapping bases.

15. Apply **PROBAND KOLL** on the membrane, with the flat side of the notched trowel, for a width of about 10 cm. Take care to fill the cavities of the membrane and to leave a thin layer of adhesive on top of the channels. Apply the adhesive on the wall with a 3 x 3 mm notched trowel for a height of about 10 cm.

16. Lay the previously formed corner on the fresh adhesive taking care to glue also the overlapped bases. Press firmly and smooth the tape to ensure the adhesion avoiding the formation of folds.



External corner

17. Cut a piece of **PROBAND 150 / 250**, 40 centimeters long, and make a cross cut in the center to half height. Fold the strip in order to obtain an external corner.

18. Cut a piece of **PROBAND 150 / 250** with a length equal to its height and then cut out a square equal to half of that.

19. Apply **PROBAND KOLL** on the membrane, with the flat side of the notched trowel, for a width of about 10 cm. Take care to fill the cavities of the membrane and to leave a thin layer of adhesive on top of the channels. Apply the adhesive on the wall with a 3 x 3 mm notched trowel for a height of about 10 cm.

20. Lay the previously formed corner on the fresh adhesive; press firmly and smooth the tape to ensure the adhesion avoiding the formation of folds. Apply the second piece with **PROBAND KOLL** over the formed corner. Press firmly and smooth the tape to ensure the adhesion avoiding the formation of folds.





PRODESO MEMBRANE SYSTEM APPLICATION MANUAL

Under threshold

21. Cut a piece of **PROBAND 150 / 250** 20 centimeters longer than the threshold.
22. Apply **PROBAND KOLL** on the membrane, with the flat side of the notched trowel, for a width of about 10 cm. Take care to fill the cavities of the membrane and to leave a thin layer of adhesive on top of the channels.
23. Lay **PROBAND 150 / 250** on the fresh adhesive; press firmly and smooth the tape to ensure the adhesion avoiding the formation of folds.

On bitumen

- In case of wall bituminous membrane, apply the adhesive strip **PROBAND BU** before laying **PROBAND 150**.
24. Remove the lower protective film and press **PROBAND BU** on the wall bituminous covering.
 25. Remove the higher protective film and press **PROBAND BU** on the wall bituminous covering.
 26. Beat **PROBAND BU** with a rubber hammer to ensure its anchoring to the bituminous covering.

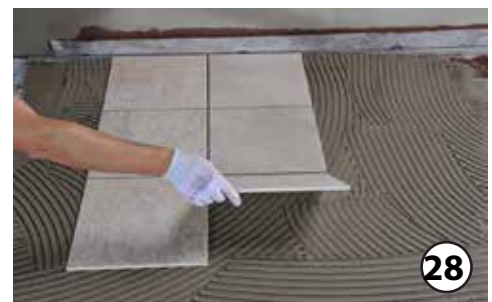
from the circular cavity before applying the flooring.

In the case of wall bituminous membrane, apply the adhesive tape **PROBAND BU** before laying **PROBAND 150 / 250**.

Flooring laying

27. Apply a C2TE adhesive on the membrane with the flat side of the notched trowel taking care to fill the circular cavities. Place along the perimeter **PROFLEX 5 PR**.
28. Immediately apply a C2TE adhesive on the membrane with a notched trowel suitable with the size of the tiles and lay the flooring. Place the joint in according with the vigent rules
29. When the adhesive is hard grout the flooring.

Warning: Protect the membrane from rain for the first 48 hours after installation. In case of rain it is necessary to remove the water





PRODESO MEMBRANE SYSTEM APPLICATION MANUAL

TECHNICAL DATA

Appearance	Polymeric membrane	
Colour	White / Cyan blue	
Shelf life	24 Months in dry environment avoiding direct sunlight and heat sources	
Total thickness	≈ 3,5 mm	EN 1849 - 2
Width	≈ 1 m	
Weight of PP sheet	≈ 160 g / m ²	EN 1849 - 2
Weight of LDPE sheet	≈ 400 g / m ²	EN 1849 - 2
Cavities number	≈ 2500 m ²	

PERFORMANCE HIGT – TECH

Longitudinal breaking load	≈ 490 N / 50 mm	EN 12311-1
Transversal breaking load	≈ 370 N / 50 mm	EN 12311-1
Longitudinal ultimate elongation	≈ 60 %	EN 12311-1
Transversal ultimate elongation	≈ 64 %	EN 12311-1
Channel volume	≈ 1,02 lt / m ²	
Crack – Bridgin Ability	≥ 1 mm	
Working temperature	- 40° C / +80° C	

CLASSIFICATION IN ACCORDANCE WITH AS/NZS 4200.2 PLIABLE BUILDING MEMBRANES AND UNDERLAYS

Resistance to dry delamination	Pass		AS/NZS 4200 1.1
Resistance to wet delamination	Pass		AS/NZS 4200 1.2
Tensile strenght MD	Medium duty	≈ 10,1 KN/m	AS/NZS 4200 1.1 - 1994
Tensile strenght LD	Medium duty	≈ 6,3 KN/m	AS/NZS 4200 1.1 - 1994
Edge tear resistance MD	Medium duty	≈ 347 N	AS/NZS 4200 1.1 - 1994
Edge tear resistance LD	Medium duty	≈ 499 N	AS/NZS 4200 1.1 - 1994
Bursting strenght	Medium duty	≈ 789 N	AS/NZS 4200 1.2.19
Surface water adsorbency	Hight	≈ 957,75 g / m ²	AS/NZS 4200 1.6 - 1994
Resistance to water penetration	Hight		AS/NZS 4200 1.4 - 1994
Folding endurance for insulation materials MD	Hight	> 2,6	AS/NZS 130.423 rp - 2008
Folding endurance for insulation materials CD	Hight	> 2,6	AS/NZS 130.423 rp - 2008
Method 3: Shrinkage	Pass	< 0,5 %	AS/NZS 4200 1.3
Water vapour trasmission, procedure B (wet cup)	Medium	< 450 and > 7 MN s/g	AS/NZS by the meth ASTM E96



PRODESO MEMBRANE SYSTEM APPLICATION MANUAL

Progress-Profiles Prodeso 10-Year Limited Warranty

COVERAGE AND CONDITIONS: Subject to the conditions and limitations as stated hereinafter, Progress Profiles* warrants that Progress Profiles - Prodeso (The "Product")** - will meet all composition and performance criteria for a period of ten (10) years from the date of purchase only when the Product is used and installed in accordance with the terms and conditions of the Progress Profiles Technical Data Sheet and industry standard guidelines that aren't in conflict with the Data Sheet in effect at the time of installation. Further, efflorescence is considered to be a natural occurrence with cementitious materials and is therefore not considered to be a defective condition and is not covered by this warranty. It is the responsibility of the owner/builder/installer to ensure the suitability of all building materials and all associated building materials for the owner's intended use. It is recommended that the owner consult an experienced and professional installer.

RESOLUTION: If the Products fail to meet this warranty, then the owner's exclusive remedy and the sole obligation of Progress Profiles, at its election, shall be to

- a) Reinstall or replace the failed portion of the floor covering assembly
- b) Pay an amount not to exceed the original square meter cost of the installation of the floor covering assembly verified to be defective.

Floor covering assembly is defined to include all Prodeso materials, non-reusable flooring surfaces, and the appropriate setting and grouting materials. Further, due to conditions beyond the control of Progress Profiles (e.g. color and shade availability, discontinuation, normal wear and tear), Progress Profiles cannot guarantee or warrant an exact match to the specific tile, stone, or other flooring materials used in the installation. In such events, substantially similar materials may be substituted.

DISCLAIMER: THERE ARE NO WARRANTIES BEYOND THIS EXPRESSED WARRANTY AS STATED ABOVE. ALL OTHER WARRANTIES, REPRESENTATIONS OR CONDITIONS, EXPRESSED OR IMPLIED, ARE DISCLAIMED AND EXCLUDED, INCLUDING WARRANTIES, REPRESENTATIONS OR CONDITIONS OF MERCHANTABILITY OR FITNESS FOR A PARTICULAR PURPOSE ARISING BY STATUTE OR OTHERWISE BY LAW OR FROM A COURSE OF DEALING OR USAGE OF TRADE. PROGRESS PROFILES EXCLUDES AND IN NO EVENT SHALL HAVE ANY LIABILITY FOR LOST PROFITS OR ANY OTHER INDIRECT, SPECIAL, INCIDENTAL, PUNITIVE, EXEMPLARY, OR CONSEQUENTIAL DAMAGES, ARISING OUT OF OR OTHERWISE CONNECTED TO FAILURE OF THE PRODUCTS OR FLOORING SYSTEM OF WHICH THEY ARE PART, NOR MISUSE OF THE PRODUCTS OR FLOORING SYSTEM, REGARDLESS OF ANY STRICT LIABILITY, ACTIVE OR PASSIVE NEGLIGENCE OF PROGRESS PROFILES, AND REGARDLESS OF THE LEGAL THEORY (CONTRACT OR TORT OR EXTRA CONTRACTUAL OR OTHER), NOR FROM ACTS OF WAR, TERRORISM, FAULTY AND NEGLIGENT PENETRATION OF THE SYSTEM, FIRES, EXPLOSIONS, ACTS OF GOD, INTENTIONAL ACTS OF DESTRUCTION OR ANY LOSSES DUE TO STRUCTURAL FAILURE OR OTHER CAUSES UNRELATED TO THE PRODUCTS OR DELAYS, OR ANY OTHER INCIDENTAL OR CONSEQUENTIAL DAMAGES. THIS WARRANTY IS GIVEN IN LIEU OF ANY OTHER WARRANTY EXPRESSED OR IMPLIED. THE REMEDIES CONTAINED HEREIN ARE THE ONLY REMEDIES AVAILABLE FOR BREACH THIS WARRANTY. THIS LIMITED WARRANTY GIVES YOU SPECIFIC LEGAL RIGHTS; SOME STATES AND PROVINCES DO NOT ALLOW DISCLAIMERS OR OTHER RESTRICTIONS OF IMPLIED WARRANTIES SO SOME OF THE ABOVE LIMITATIONS MAY NOT APPLY TO YOU.



PRODESO MEMBRANE SYSTEM APPLICATION MANUAL

TRANSFERABILITY: This limited warranty extends **ONLY** to the original end-user (defined as original intended owner and user of the property / unit in which the installation is incorporated – herein referred to as **Owner**) and is not transferable or assignable, unless approved in writing by the Technical Director or an Officer of Progress Profiles or otherwise prohibited by specific state or provincial law.

MODIFICATION TO WARRANTY: No changes or modification of any terms or conditions of this warranty are allowed unless authorized by written agreement and signed by the Technical Director or an Officer of Progress Profiles.

EFFECTIVE DATE: This warranty shall supersede and replace any and all prior oral or written warranties, agreements, or other such representations made by or on behalf of Progress Profiles relative to the Product or the application of the Product and shall apply to any installation occurring on or after 1 July, 2016.

CLAIMS ON THIS LIMITED WARRANTY: To make a claim under this Limited Warranty, the Owner must provide Progress Profiles with written notice within 30 days of any alleged defect in the Product covered by this Limited Warranty, together with the date and proof of purchase of the Product, proof of the cost of the original installation and name and address of all installers, failing which this Limited Warranty shall be of no legal effect. Progress Profiles reserves the right at its election and as a condition of this Limited Warranty to inspect the alleged failed and defective condition.

All Claims shall be sent to:
Progress Profiles S.p.A.
Via le Marze, 7
31011 Asolo (TV) Italy

***For the purpose of this warranty Progress Profiles shall provide the warranty for the Product for end users located in the United States and in Canada. This warranty is limited to sales of the Product made in and intended for use in the United States and Canada**

****Progress Profiles – Prodeso - (the Product): The Product is defined the uncoupling and waterproo-**

PRODESO MEMBRANE SYSTEM APPLICATION MANUAL

INSTALLATION CHECK LIST

1. Before laying watch the video <https://www.youtube.com/watch?v=l1I6EiWYHX4>
2. Verify if the support is clean from dust, oil, grease, friable or weakly anchored parts, cement residuals, lime, plaster or paintings.
3. Verify the screed flatness; in case of waterproofing if there are slopes suitable for the discharge of rain waters.
4. Verify the solidity of the screed with a hammer.
5. Verify the resistance to the abrasion of the screed with a chisel.
6. Verify if cracks bigger than 1 mm are present. In this case repair them with an epoxy bi-component ultra-rapid resin.
7. In case of overlapping, verify anchoring and the cleanness of the old floors.
8. Unrolled the membrane under sunlight before the installation no less than 30 minutes.
9. Verify the fluidity of the adhesive mixture before laying Prodeso (see the video 9. <https://www.youtube.com/watch?v=JepXWs7KJ-E>)
10. During laying verify the full back coverage of Prodeso (watch the installation video https://www.youtube.com/watch?v=j-b-QdDx_2M at 1 minute and 5 seconds).
11. Protect Prodeso to sunlight and against heavy mechanical loads to avoid damage after laying

REQUIRED MATERIAL

- a. Prodeso
- b. Profoil 150 / 250
- c. Proband Koll
- d. Proband BU (only in case of bitumen on wall)
- e. Notched trowel 5 x 7 for Prodeso laying
- f. Flat trowel for Proband 150 / 250 laying on floor
- g. Notched trowel 3 x 3 for Proband 150 / 250 laying on wall
- h. Notched trowel in according with the tiles size
- i. Plastic trowel to press Prodeso
- j. Adhesive mixer
- k. Mixing paddle
- l. Buckets
- m. Cutter for Prodeso and Proband 150 / 250